



OVERVIEW

We will be downloading the two images from your contestant profile for the Photography Review slideshow. We will also share them with all scouts via google drive. Typically one is a headshot and the other is 3/4 or full length. For headshots a smile is recommended.

TO ADD/UPDATE PHOTOS: Login to your contestant account and update under the tab "My Profile." There are two fields for photos labeled Profile Photo and Second Profile Photo. After downloading, ensure you press "SUBMIT" at the very bottom and your updated photos appear in your profile. **if your photo is not showing after you submit, you may need to resize your image. All singers and dancers must submit tracks electronically via upload to the provided Google form one month prior to the Expo. Include your name and "Singing" or "Dancing." Singers should send a karaokeversion w/o lead vocals. Check out <https://www.karaoke-version.com/A> hard copy backup of the tracks should also be available on flash drive if needed at registration.

PRACTICE MAKES PERFECT

All models / talent should practice as much as possible before the Expo. You can create your own audience at home by inviting friends and family to watch you practice for your different categories. The more you become comfortable in front of an audience, the more relaxed you will be at the actual event.

WARDROBE

When selecting wardrobe, music or scripts, keep your age and look in mind. You do not want to appear older

or younger than your actual age. Models / talent will wear their own clothing. The fit of the clothes is the key component to this category. The goal is to show off the physique and color tones of the model / talent.

Female models age 13 and older should wear heels when walking the runway. The height of the heel is not important. The most important aspect of your shoes is that you walk well in them. Scouts will be paying attention to your build and how naturally you move, not how cute the shoes are. Models are encouraged to practice walking in the heels they plan to wear at the Expo. As a suggestion, wear shoes with straps to help to secure them to your feet. We do not suggest wedge style shoes as they affect your walk.

MAKEUP

Children 12 years and under should not wear heavy makeup. Children should only wear light gloss and a touch of mascara.

Male and female talent are encouraged to wear matte powder when on stage to help minimize shine under the bright lights. Maybelline sells a Matte Face Powder in Translucent, which is colorless for men but will absorb shine.

If a female is 13 or older and has chosen a shorter skirt, a full undergarment or cheerleading shorts must be worn underneath. The scouts will be sitting at the bottom of the runway and thong underwear is unacceptable.

SMILE OR SERIOUS?

Performers 12 and under should smile during the runway showcase. Performers 13 years and older should have a serious, high-fashion attitude on the fashion runway only. No blowing of kisses, waving or winking.

FOR MODELS

Runways: During the runway walks, each model / talent will be given an equal amount of time to complete one circuit on the runway.



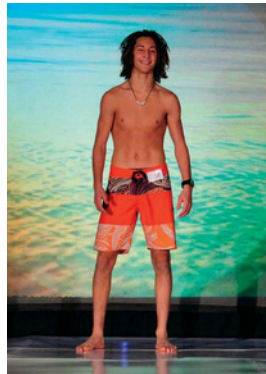
Fashion Runway: Attire can range from fun and hip to formal. Children are encouraged to show off their individual style. High Fashion Models (ages 13+) are encouraged to showcase their figures and should don a more chic look. Males jackets, ties, and vests are optional. Attire

should be black and/or white from head to toe. Prints and patterns in black and white are acceptable.

Jeans Runway: Children and adults will be required to wear blue denim for the majority of their outfit. Denim can be jeans, pants, shorts, skirts, body suit, etc. Children ages 12 and under should smile and 13+ can smile or have a serious look.

Swimsuit / Fitness Runway:

Models can wear swimwear or athletic apparel. Swimsuits should be modest while still accenting each model's best attributes. Infants may wear hats. Female models may wear a one or two-piece. Male models may wear "board type shorts" or square cut suits. No bikini Speedo suits are allowed for this showcase. Male and child models may walk barefoot.



Photography Review with Scouts: This showcase provides entrants the opportunity to showcase their best two photographs. Images can be in color and/or black and white.

Photos can be headshots, three quarter or full length. We encourage all Discovery Spotlight participants to take part in this showcase as it is included with all packages. Professional photos are suggested. You will choose the photos for this category. Recent photos are advised to show off your current look.

Acting, dancing and singing talent are advised to show at least one headshot "close up" of the face. We encourage everyone to have 10-12 printed copies of a photograph, headshot, or composite card to leave with each scout.

Kids: Hair color, eye color, & DOB.

Women: Height, Dress, Bust, Waist, Hips, Hair Color, Eye Color, & Shoe Size.

Men: Height, Weight, Hair Color, Eye Color, Waist, Inseam, Suit, and Shoe Size.

Runway Walking Pattern

Models in fashion are advised to walk at a natural pace and move hands equally by his/her side. Fingers should be relaxed while walking.

1. Participants enter runway from stage left.
2. Stop in model position for 3 seconds at the top of the runway. During posing, hands can be on the hips for females but not for males.
3. Walk to the end of the runway and stay for 3 seconds. Look to the right, then the left. Eyes should look down at the scouting tables.
4. Turn and make your way back to the top of the runway. Pivot and stop for 3 seconds. Exit stage right.

Children under the age of three can have a parent walk them down the stage if needed. Any children comfortable walking alone should do so.

FOR ACTORS

Actors will be required to slate (introduce themselves with name and age - age only, if under 18) before each commercial or monologue. Actors are encouraged to research and select their own scripts. Each script must be age appropriate and include no adult language. Scripts should be memorized. Actors should speak loud and clear. Talent will have a microphone but should still project their voice. Props are not allowed during the TV commercial but a handheld prop is allowed during a monologue. If you are having difficulty finding your own unique script, your director will provide you with a link to scripts that have been used in previous showcases. Actors should dress for the part they are portraying.



perform an original commercial, if they choose to write one, if it is approved by the director. Remember to smile when you are selling a product or service.

Monologue: Each monologue must be no longer than 60 seconds. Monologues may be either dramatic or comedic. When considering a monologue script, ask friends and family how they perceive you. This can give insight regarding your role type. You can find monologue scenes in books or online. You can even pull a monologue scene from a film script. Actors will be the only person on stage and will have full use of the stage during this showcase. There will not be interaction from another reader.

TV Commercial and Monologue Pattern

1. Enter stage left.
2. Hit mark on the stage and perform facing audience.
3. Exits stage right.

Commercial: Each commercial must be between 30-45 seconds from start to finish. Performers will stand on a mark and look directly out as if looking into a camera. Feet must remain firmly planted on the mark. Actors may use only the upper body for expression, if necessary. Actors may per-



FOR SINGERS & DANCERS

All vocalists / dancers are allowed to perform one song / dance. For vocalists, this song should show range, performance ability and personality. For dancers this should be your strongest dance choice that shows basics, techniques, flexibility, personality, and

Singers will be given up to 2 minutes to perform.

Singers tracks should be instrumental (karaoke), without lead vocals. Hand held props are allowed for this showcase. Singers who perform with a pre-approved instrument must have their instrument with them at event check in. Music must not be longer than 2 minutes before the track fades. If the track is longer than the allotted time, audio technician will fade music manually. Singers may wear costumes to enhance their performance.

Dancers may wear costumes, simple leotards or dress in a more modern style. Handheld props are allowed for this showcase as well. Music must not be longer than 2 minutes and 30 seconds before fade out. If the track is longer than the allotted time, audio technician will fade music when allotted time expires.

Singing and Dancing Pattern

1. Enter stage left.
2. Vocalists will be given a handheld microphone backstage. Take the microphone to center stage and wait for music to start. Dancers walk directly to the starting position and wait for music to start.
3. Continue with performance.
4. If you are a vocalist, return microphone backstage.
5. Exit stage right upon completion.



Should you have questions or concerns, please email Rebecca at rebecca@discoveryspotlight.com.